



# Llangattock Green Valleys newsletter

Issue 121  
December 2021

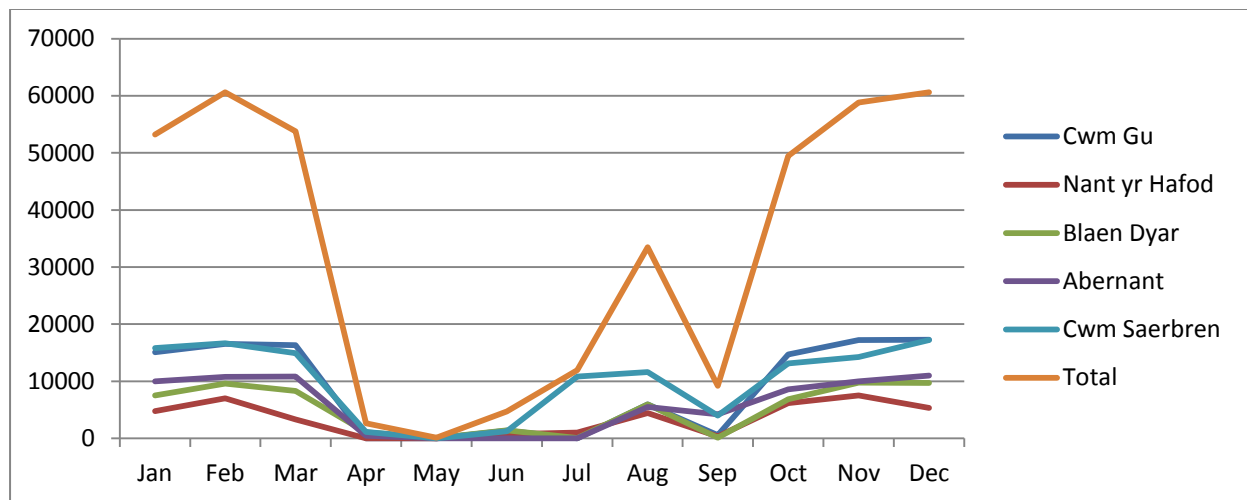
<http://www.llangattockgreenvalleys.org/>

## ENERGY GENERATION PROJECTS

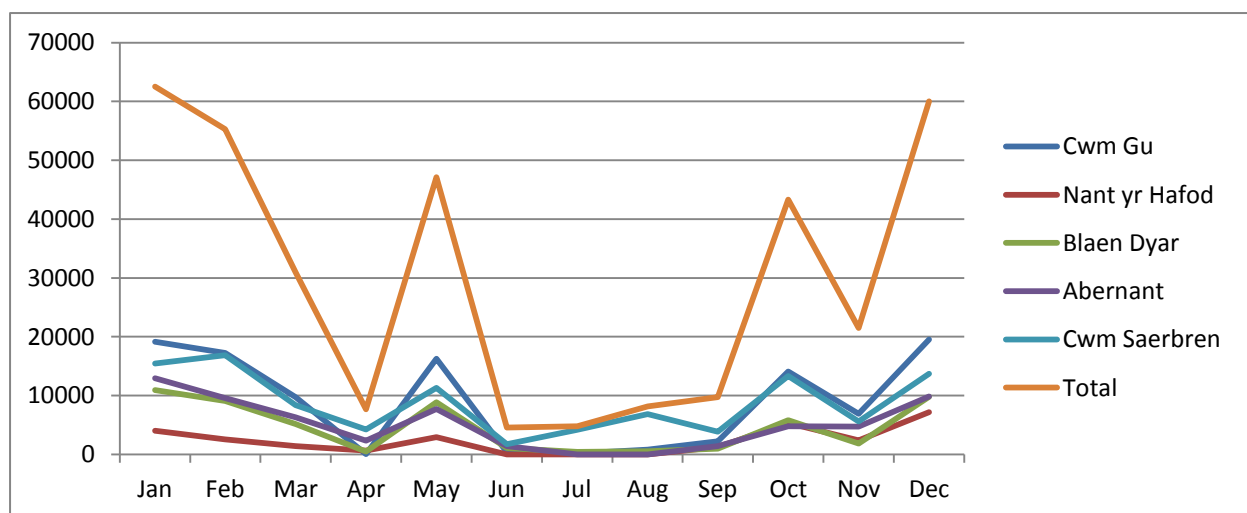
By Steve Sharp

### Hydro schemes update

I think many of us have enjoyed the dry, sunny weather this November but this has substantially reduced the generation of our five hydro schemes when compared with previous Novembers. To illustrate this, I have included below generation graphs of the 12-month period to end of November for 2020 and 2021, which also show very different generation totals for May and August.



**Generation (kWhs) of LGV MH-2's five hydro schemes (12 months to November 2020)**



**Generation (kWhs) of LGV MH-2's five hydro schemes (12 months to November 2021)**

On behalf of the LGV MH-2 board, I'd like to wish everyone a peaceful and Merry Christmas and a Happy New Year.





## IT'S CHRISTMAS

By Jackie Charlton

Llangattock Community Woodlands deals mainly with planting and felling trees to maintain an environmental philosophy and encourage carbon capture. This year has been no exception and our volunteer base has increased, demonstrating local commitment to doing something about the climate emergency and improving the environment.



Putting up the local Christmas tree didn't quite fit in with our normal activities; we either plant young trees to grow on to absorb carbon or we coppice or fell trees for a sustainable fuel. But how could we refuse Llangattock Village Society when they asked if we could help to erect, yes, erect a tree instead of planting one?

It was quite a task because the original plan was to help stand a 4 metre tree, which seemed manageable, but it turned out to be a 6 metre tree which might not seem much bigger but, of course, you get extra height *and* width. It took about 10 of us to get the tree up, stable and safe, ready to be exposed to the community with a big event on 1<sup>st</sup> December.



It was a great community effort which will help us all as we go forward into another year of the pandemic, which has been traumatic for us all. Llangattock has pulled together through this and one single project encompasses a massive community pulling together to overcome the threats which still impinge on our daily lives. The tree symbolises community cohesion, working together and collectively playing a part.



### BOB'S BEE NOTES

On behalf of Bob the Bee, Happy Christmas to all our readers during this festive season. It has been quite cold in Llangattock during November with a few unwelcome frosts for the bees. It has also been very dry and I see the Onneu brook at the bottom of my garden is running very low for the time of year. You could have stepped across it earlier this week so that shows how dry it has been. At this time of the year there is little to do with inspection of the bees as they will be keeping the Queen warm in the cluster. She is surrounded by them, protecting and insulating her, thus keeping the temperature up in the hive too.



We now start checking and monitoring the dead Varroa mite levels in several hives (besides my own) to give me an idea of the mite populations in this area. There is a monitoring board underneath each hive which is regularly cleaned with a scouring pad. We then inspect it and divide the number of mites by the number of days it has been since I cleaned the board. This will give me a daily average natural mite drop. We look to see if the evidence indicates a high level of mites. We measure to see if they exceed about six mites dying from old age or if there is damage to the mites. It could indicate the

mites are being attacked by the bees. If the natural dead mite numbers are high, I sprinkle icing sugar over the bees between the frames so that the bees' cleaning and preening action dislodges the mites that fall onto the monitoring board. Then the process starts all over again.



Bees need winter feeding so we keep a bag of 'fondant' for the bees to eat. Each hive has a feed hole on the crown board for bees that are wandering about inside the hive. The 'fondant' is made especially for honeybees as a supplement feed that we can give to any colony that needs additional feeding. I keep a bag for my colonies throughout the winter months to make sure they don't go hungry and as the bag is made of clear plastic, it is possible to see the bees eating the contents.

We have had a very poor year with regard to honey surplus from our bees, so far I have only heard of one person locally with any honey this year. All of my colonies are well fed, ready for the winter and spring, so all being well they should come through the cold and damp as healthy as possible.

Good bee keeping.  
Bee Bob.



LCW Trustees are justly proud of the commitment and enthusiasm of all our volunteers. We meet regularly every Tuesday and you can find information on where and when we meet on our website [www.lcwg.btck.co.uk](http://www.lcwg.btck.co.uk). If you are interested in environmental management, green wood crafts or bee keeping then please do get in touch. Please email Eric Gower [eric.gower@gmail.com](mailto:eric.gower@gmail.com) for a membership form.

## LACAS

By Sue Cartlidge



On 5<sup>th</sup> November we managed to have an actual social occasion this year – our No-Fireworks Bonfire Night Do. Soup and various snacks were on offer as well as some of our very own home-grown cider – kindly made and carefully looked after by Bob Needs. A good time was had by all who attended.



Following the Committee's plot inspection, we were also able to present some of the prizes that we would normally do at our Summer Show, which of course had to be cancelled this year. Judy from plot 19 (right) was awarded the Brian Wintle Cup for Best Full-Size Plot of the Year and Sandra from plot 30B (below) was awarded the Llangattock Challenge Cup for Best Newcomer.



Meanwhile, when we're not partying on the allotments, this time of year we are gently winding down for the winter though some will be pruning their fruit bushes, netting the brassicas against marauding pigeons, staking up the Brussels sprouts and generally keeping the weeds down by covering up the ground or by planting a green manure crop such as rye grass or winter vetch.

Although LACAS has welcomed a number of new members this year, several people have also left so we now have a couple of plots available. Do contact Membership Secretary Sue Cartlidge in the first instance on [llangattockallotments@gmail.com](mailto:llangattockallotments@gmail.com)

## ECO-TRAVEL IN LANGATTOCK

Thanks to those who completed the survey on modes of travel by residents of Llangattock, compiled by Llangattock Green Valleys (LGV) and Llangattock Community Council. The primary interest of LGV was the uptake of electric vehicles and the possible need for public charging points in the village.

Of the 67 responses about 14% already have an electric vehicle and the majority of those are hybrid, so only a small number of them need a home charger. About 30% said they are considering purchasing an electric vehicle in the next 2 years and about 50% of those considering purchase said that local charging points would make them more likely to buy an electric car. There is clearly considerable interest in electric vehicles. However, further research indicates that interest is not sufficiently strong to enable us to make a convincing case for a grant for the initial investment, nor to cover the operating costs within the next few years. Other possibilities are being explored with Llangattock Community Council and we hope to report on those in the future.

Peter Blood, George Smith and Simon Walter

## LGV VOLUNTEERS NEEDED PLEASE! CAN YOU HELP?

We are looking for a number of people who would like to get involved at Director and non-Director level. Please get in touch with Simon Walter if you would like to explore the ways in which you can help: [admin@llangattockgreenvalleys.org](mailto:admin@llangattockgreenvalleys.org). You can meet our Board of Directors [here](#).

We'd also like to get a few more volunteers involved in monitoring the hydro schemes and taking readings. This would only take around an hour or so once every 6-9 weeks.

If you are interested in helping, please contact Simon Walter using the email below: [admin@llangattockgreenvalleys.org](mailto:admin@llangattockgreenvalleys.org)

